



Artistic All Ceramic Dental Studio

Where Art & Science Meet



Artistic All Ceramic Dental Studio
(609)-455-2111 alirashada1@icloud.com
www.artisticceramicdental.com
22 Brookville Rd. Edison, NJ 08817

Thank you for showing interest in Artistic All Ceramic Dental Studio



We are extremely excited about the future of dentistry and the role Artistic All Ceramic Dental Studio will have in leading this digital evolution.

Artistic All Ceramic Dental Studio is your resource and we are committed to remain relevant for our dentist-clients in this era of industry change.

Artistic All Ceramic Dental Studio has been a traditional, full-service provider with decades of experience in fixed and removable restorations, including crowns, dentures and implants. We have a deep knowledge of current dental materials so we can offer you quality products and differentiated services at a competitive price.

We also want you to be aware of our wide range of modern digital workflows that will create efficiencies and patient satisfaction.

As the owner of Artistic All Ceramic Dental Studio I encourage you to give us a call to see how we can best support you. We look forward to working with you.

Ali Rashada, CDT
Founder

Full Mouth Reconstruction

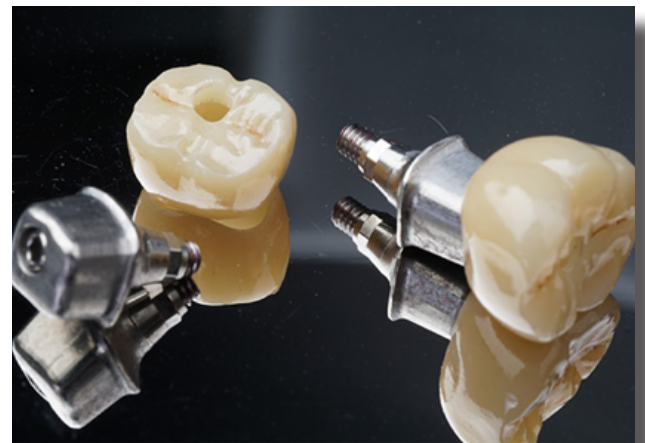
A successful procedure requires planning and teamwork. Artistic All Ceramic Dental Studio specializes in treatment planning for full mouth reconstructions. We work with our clients to visualize the final result before starting the procedure. Predictability and control is our objective

- Support we offer:
- Case Planning
 - Case Analysis
 - Full Contour Wax-Ups
 - Teeth Set-Ups
 - Surgical Guides

Fixed Restoration

From single crowns to multi-unit bridges, inlays, onlays and veneers, Artistic All Ceramics offers a full range of approved materials for all your clinical needs. With recent scientific advancement, many materials now offer versatility, strength and aesthetics, that weren't available in the past; contact our team of restorative specialists for case consultation.

- Porcelain Fused to Metal (PFM)
- Full Contour Zirconia (FCZ)
- Layered + High Translucency Zirconia (PFZ)
- IPS e.max®
- Full Gold Crowns (FGC)
- Polymethylmethacrylate (PMMA)
- Wax Ups



Veneers

Veneers offer solutions to close diastemas and to improve alignment and the shade of the teeth. We offer zirconia veneers that can be done with minimal preparations. Zirconia veneers, offer more stable margins, higher strength but are just as esthetic as any other all ceramic veneering systems.

We customize for each individual smile:

- E.max® Press Impulse
- IPS e.max® HT
- E.max Press LT
- Non-prep & minimum prep veneers



Implant Planning

Begin with the end in mind and let us help you visualize the case to final restoration. Dental implant surgery for single or multiple teeth, requires proper planning, along with the right resources. Our expert team offers complete support to make your surgery, and the final restoration successful, ensuring high patient satisfaction. Local in-house 3D printing allows for improved turnaround time, in addition to cost efficiencies. Place with Precision!

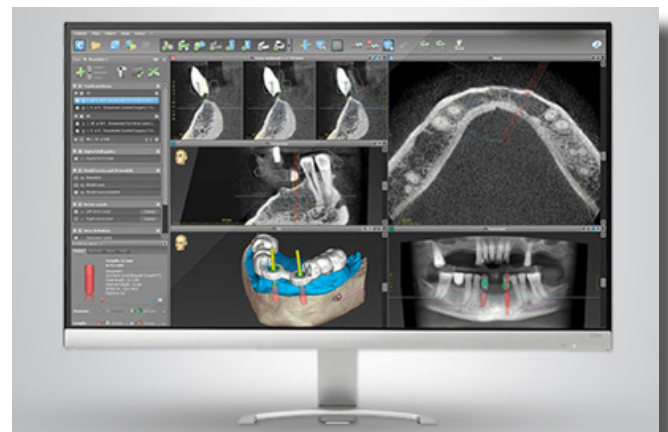
- Bone Reduction Guides
- Implant Placement Guides
- Temporaries

Implant Restorations

One of the fastest growing segments in dentistry today, implant restorations are now the gold standard of care when treating edentulous or partially edentulous patients. Due to recent advancements in technology and material, implantology has never been more predictable. With a wide variety of options available, our Implant-based restorations offer high aesthetic results, backed by function and stability. We work with the implant manufacturer of your choice, crafting a natural looking emergence profile, finalizing the restoration to your desired outcome.

**Full spectrum of anodization shades available to optimize the aesthetics of your case. *Implant manufacturer partners include Straumann®, Nobel Biocare®, BioHorizons®, Dentsply Sirona®, Zimmer Biomet® and many more.

- Custom Abutments – Zirconia & Titanium
- Genuine Straumann® Custom Abutments | Designed and Milled Locally
- Over-Dentures
- All Final Restorative Materials and Designs Available



All-On-4 Dental Implants

Implant-supported solutions such as All-On-4 dental implants have significant physiological benefits. Without dental roots to stimulate the underlying periodontium and jaw bone, the body naturally allows your facial bones to waste away and be re-absorbed. With an implant-based solution, however, bone resorption can be partially or entirely mitigated. Because dental implants are embedded into the jaw bone itself, much like natural dental roots, they are able to transfer stimulating forces into the jaw. As a result, the body knows to maintain and retain bone depth and density.

With an implant-based solution, however, bone resorption can be partially or entirely mitigated. Because dental implants are embedded into the jaw bone itself, much like natural dental roots, they are able to transfer stimulating forces into the jaw. As a result, the body knows to maintain and retain bone depth and density.



Dentures

Using a variety of technologies, processes and materials, (SR IvoBase® Injection Process, Laser Welding, Chrome Cobalt and Titanium,) our extensive options for dentures include full, partial, hybrid or implant supported cases, in addition to repairs and relines. Using premium quality teeth, our materials are industry approved, ensuring longevity and durability.

- BPS® Brand Dentures
- Vitapan Excell® | Vitapan® Lingoform | Vita Physiодens®
- Lucitone® FRS® (Flexible metal-free partial dentures)
- Thermoflex Acetal Resin Partial Dentures (Flexible metal-free removable restorations)
- PermaSoft® Denture Liner
- Vitallium® 2000
- Wironium® & Wironium® Plus
- EsthetiClasp™



Appliances | Therapy Devices | Models

We offer many different types of appliances, fabricated from the highest quality materials. From simple Hawley retainers to more complex sleep apnea appliances, each case can be customized to meet individual needs.

- Essix Retainers
- Kois Deprogrammers®
- Night Guards (Hard and/or Soft)
- Hawley Retainers
- Sports Guards (Single, Double or Triple Layer)
- Gelb Appliances
- TAP 3®
- dreamTAP®
- The Silencer® *NEW*
- 3D Printed Models
- Milled Models

Artistic All Ceramic Services

Save valuable time and increase the predictability of treatment outcomes with the Artistic All Ceramic Premium Service. Discover valuable Lab perspective by partnering with us on Pre-Design, material choice, pre-treatment options, and technical Pros and Cons. Artistic All Ceramics includes:

- Initial Case Analysis Report, including Facial Analysis Photography
- Dental History Comments
- Diagnostic Risk Assessment
- Treatment Plan
- Smile Library of Before and After's
- All Models
- Diagnostic Wax Up
- Stents
- Restoration

* Please contact Ali for further details.



Artistic All Ceramic Dental

(609)-455-2111

alirashoda1@icloud.com

www.artisticceramicdental.com

22 Brookville Rd. Edison, NJ 08817